

WIRES-X

How to Reject a Callsign In Wires-X

WIRES-X

From time to time it may be necessary to prevent a particular callsign from connecting to your Wires-X Room.

This report details the two known ways to successfully reject connections to your room.

WVRES-X

Adding a callsign to the reject list does not prevent that ham from using your repeater but it will prevent him from connecting to your room and changing it to another room.

We use a common room to link all of our repeaters together and we don't want anyone changing from that room since doing so removes that repeater from the link. When that happens other users have no way of knowing that repeater is no longer linked.

WIRES-X

There are two items that can be used to reject a callsign. The Radio ID of the offending radio or the DTMF Node ID of the offending Node.

You can obtain the Radio ID from the Mobile Users List screen in the Wires-X software.

You can obtain the DTMF Node ID from the Group Window of the Connecting Node List also in the Wires-X software.

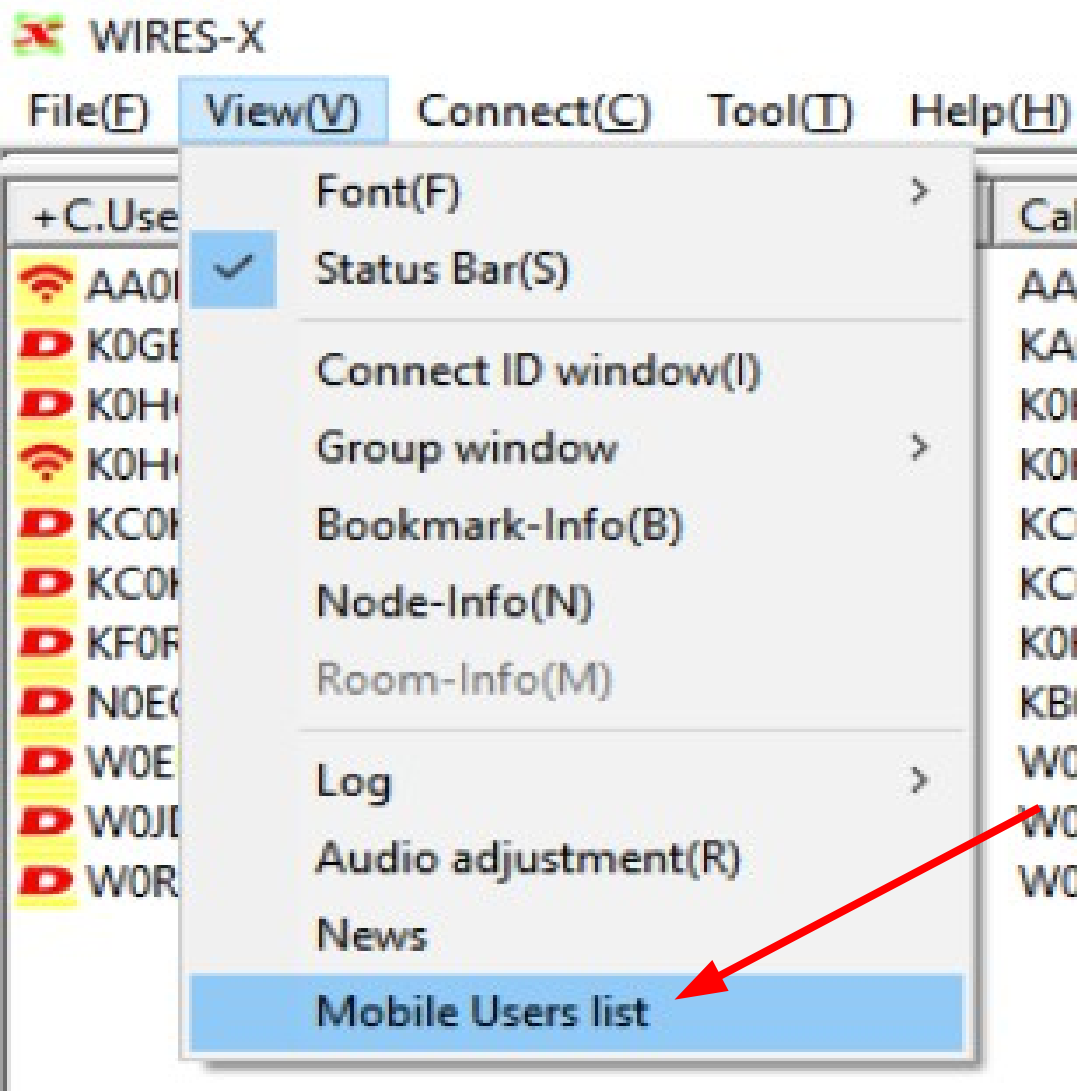
WVRES-X

If you choose to access the Mobile Users List, be aware that unless the offending station has been heard by the station requesting the reject, his callsign will not be in the list.

If this is the case you will not be able to reject the callsign using this method.

You cannot “pre reject” a callsign. It must have been heard by the station requesting the reject in order to be in the Mobile Users List.

WIRES-X



To obtain the Radio ID, access the Mobile Users List screen.

Select it from the View(V) menu tab.

WIRES-X

WIRES-X

File(F) View(V) Connect(C) Tool(T) Help(H)

Mobile Users list

+CallSign	Radio ID	Last received time	Recv CH	Last position
KORHP-RICK	Q5HBz	2017/05/05 19:02:30	Room	N:38 52' 56" / W...
KORHP-RICK	e5HBz	2017/04/28 18:25:50	Room	N:38 53' 38" / W...
KORSE-RAY	E5Ck5	2019/06/11 15:36:58	Net	
KOSXY	F0jeL	2019/06/08 13:26:54	Net	N:41 37' 49" / W...
KOWLZ-ODD	F0nI8	2019/06/07 21:42:16	Net	N:38 51' 07" / W...
K0XM	E0kSA	2017/05/12 13:37:10	Room	
K1KC-PORT1	E0F7m	2019/05/01 21:34:42	Net	N:33 45' 10" / W...
K1NRA	E5UMq	2019/04/27 21:30:47	Net	
K1VOV-VITO	F54JV	2019/05/20 20:41:29	Net	N:33 51' 03" / W...
K2AS	E0nRd	2019/02/04 19:46:35	Net	
K2CSX-BXNY	F09aq	2017/04/21 10:50:01	Room	N:40 49' 50" / W...
K2RWL-BOB	G0Epe	2019/02/03 15:15:33	Net	N:27 06' 08" / W...
K2SDJ-SCOT	F0HWH	2017/05/23 13:19:51	Room	N:38 55' 20" / W...
K2SDJ-SCOT	F55of	2019/06/12 20:20:49	Net	N:38 49' 19" / W...
K3ALG/PA	HF6NO	2019/04/27 20:47:12	Net	

List count = 767

MyRoom reject Node reject Add GM member Export Help Close

Sort the list by clicking on the CallSign column and scrolling for the callsign you are looking for.

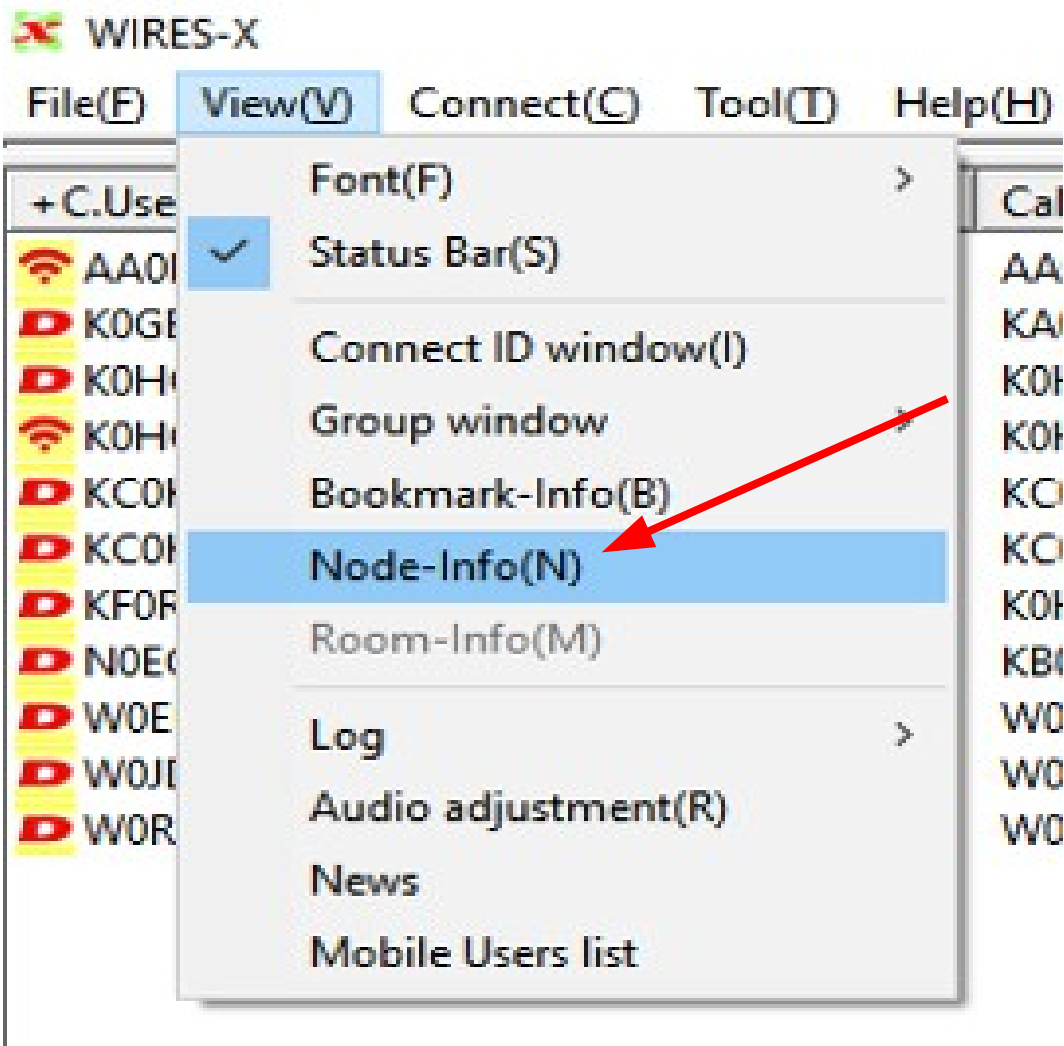
In this example we will pick one at random to be used in our examples.

We will choose K0XM.

Click on K0XM and then click on Node reject.

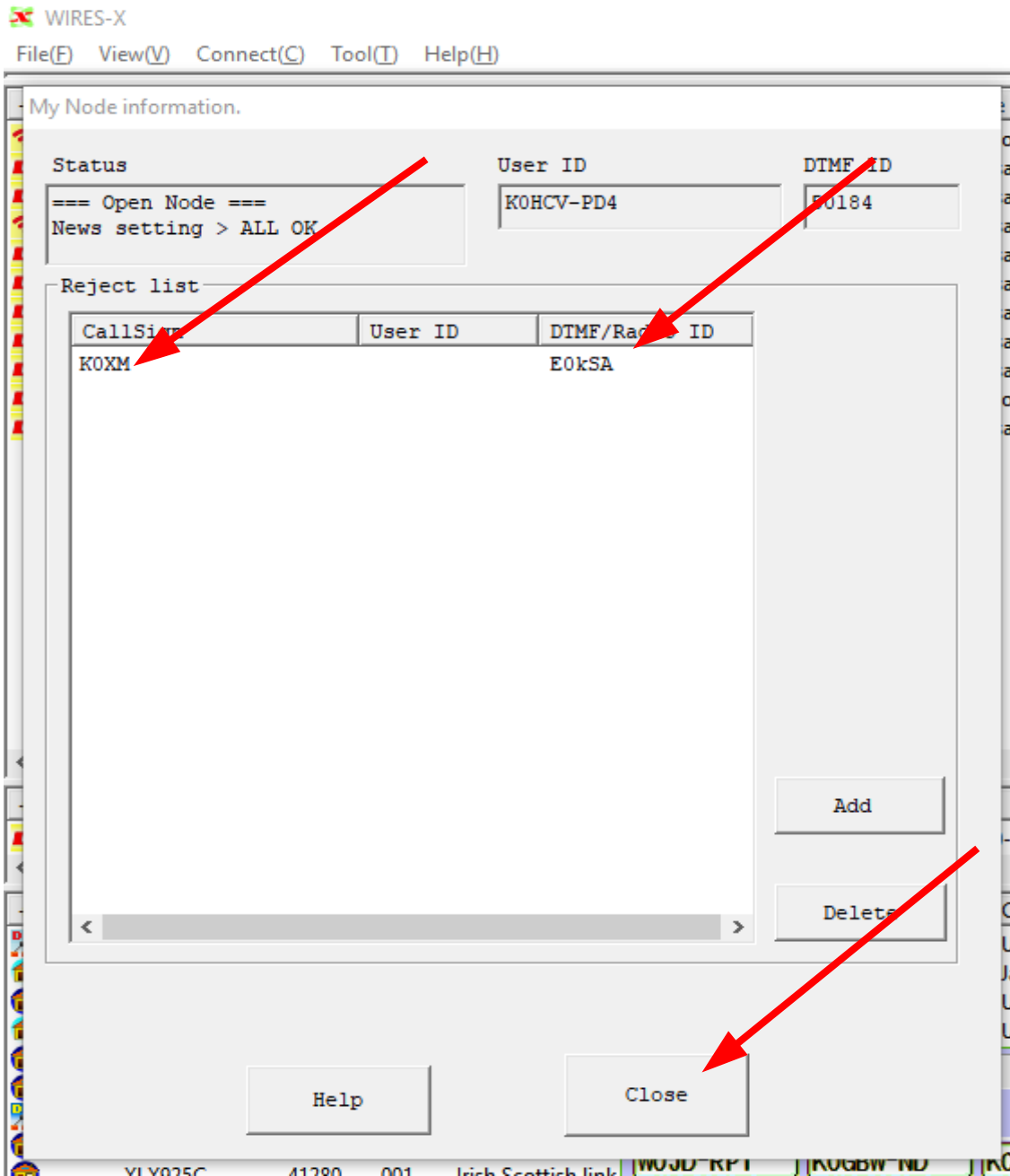
This will add the callsign and the radio ID to the Node reject list.

WIRES-X



To verify it has been added to the Reject list, click on the View(V) Menu option and select Node-Info(N).

WIRES-X



Here you will see that the callsign was successfully added to the My Node Reject List.

The wires software also added the Radio ID to the list.

Click the Close button to return to the Wires screen.

WVRES-X

If you choose the DTMF ID method, you will have to have the offending stations DTMF Node ID to proceed.

If the offending station is connected to your node you can reject him by right clicking on his callsign and selecting Node Reject.

Otherwise you will have to obtain his Node ID from another source and manually enter it on the Node-Info(N) screen.

WIRES-X

WIRES-X

File(F) View(V) Connect(C) Tool(T) Help(H)

+C.User ID	DTMF ID	Act	Cal
AA0KM-ND2	50585	IN	AA
K0HCV			K0H
K0HCV			K0H
K00KV			K00
K00KV			K00
KFORS-			K0F
N0EG-			KBC
W0ERT-			W0
W0JD-RPT	11680	IN	W0.
W0ROO/R	36775	IN	W0
W5UC-ND	50808	IN	W5

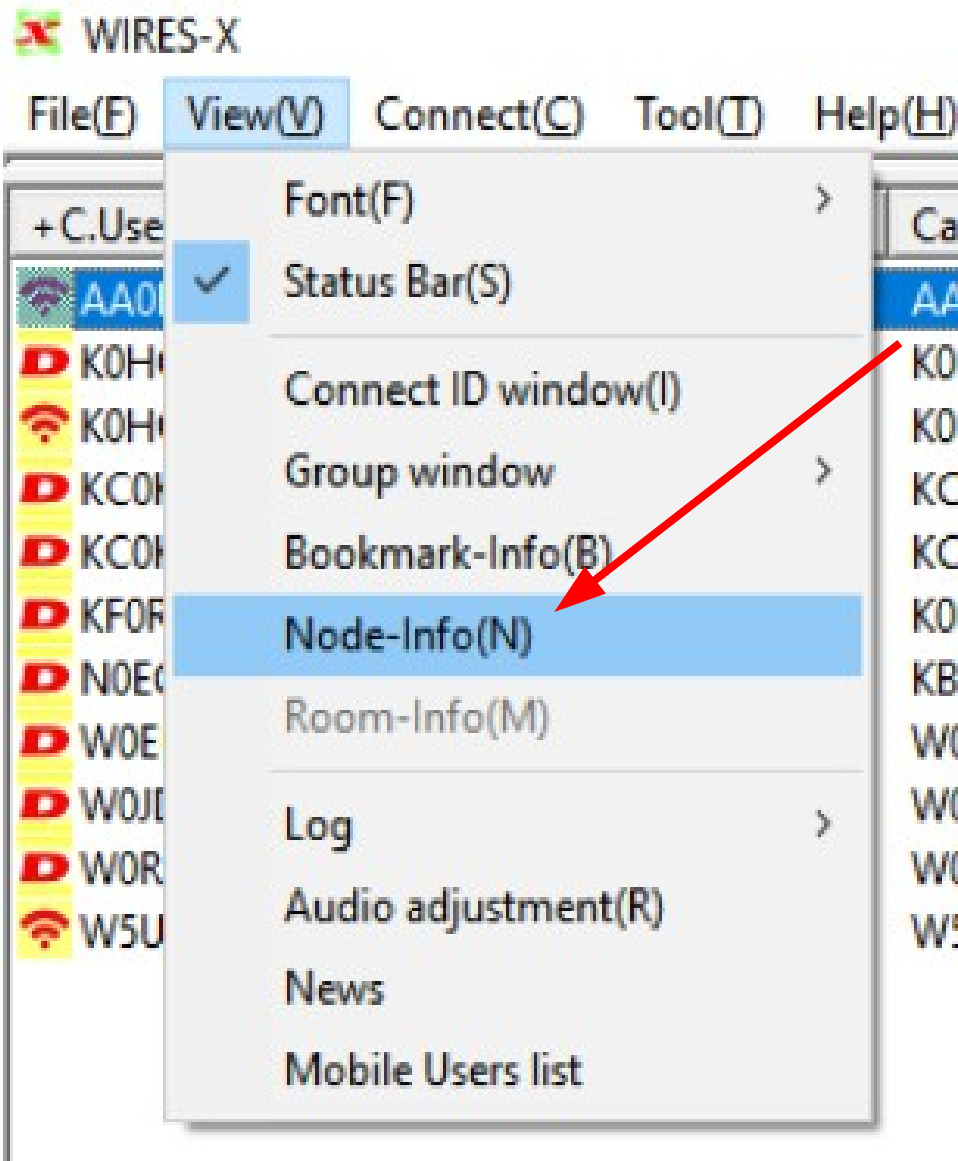
Context menu for AA0KM-ND2:

- Connect
- Get Info
- Window default
- Add Bookmark list
- Node Reject**

If they are connected you can right click on their callsign and select the Node Reject option.

This will add them to the Node Reject screen.

WIRES-X



If they are not connected to your node but you have their DTMF Node ID, go to the Node-Info(N) screen and manually add them to the reject list.

WIRES-X

WIRES-X
File(E) View(V) Connect(C) Tool(T) Help(H)

My Node information.

Status: === Open Node ===
News setting > ALL OK

User ID: KOHCV-PD4

DTMF ID: 50184

Reject list

CallSign	User ID	DTMF/Radio ID
KOXM		E0kSA

Input ID

Please input User ID of a Node/Room or CallSign of a mobile station to add to a member.

18952

OK Cancel

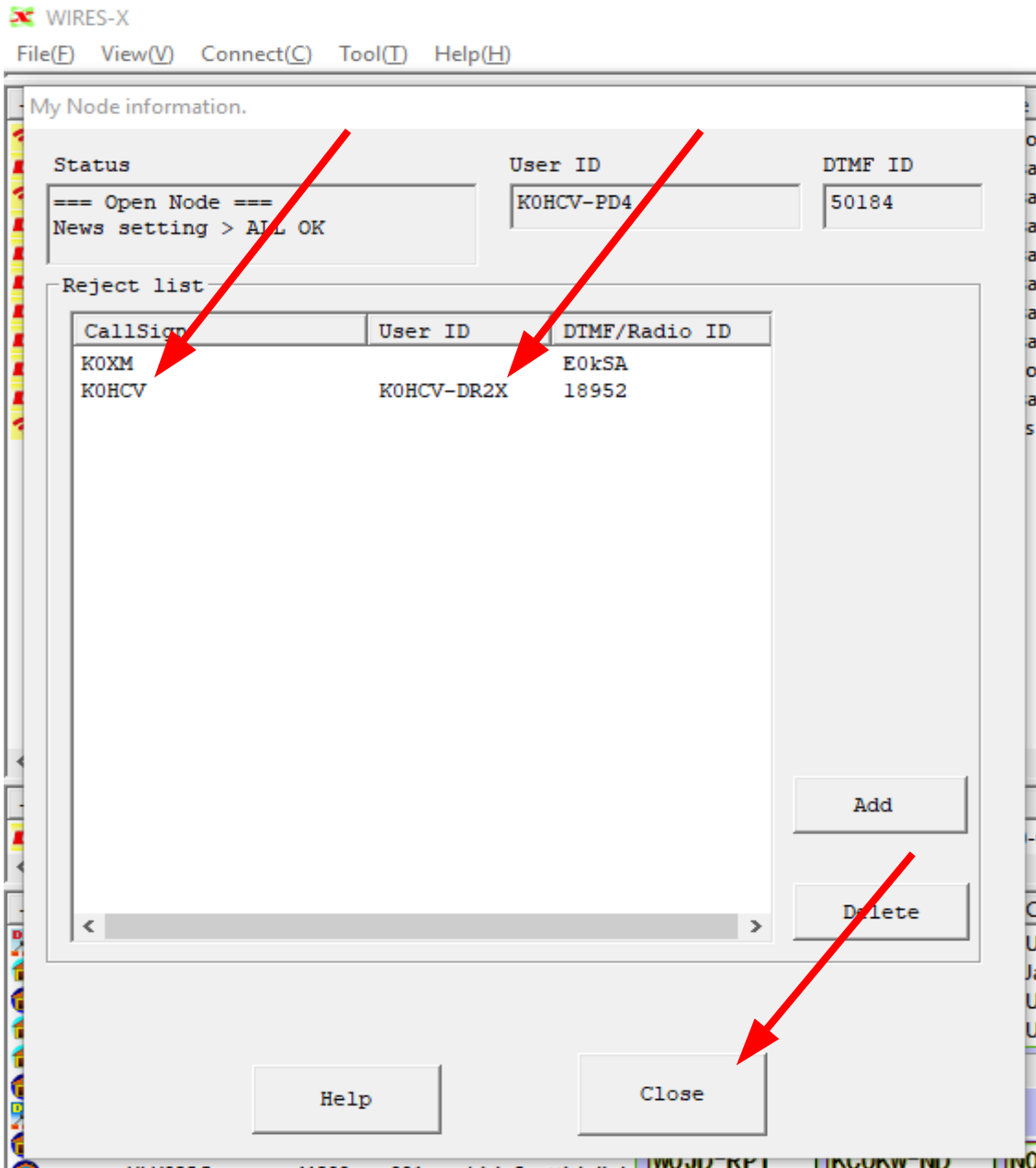
Add

Delete

Help Close

Click on the Add button and enter the DTMF Node ID in the Input ID box.

WIRES-X



Wires will automatically enter the callsign and the User ID for you.

Then click Close to return to the Wires screen.

WIRES-X

According to Yaesu the reject is based on the Radio ID or DTMF Node ID and not the callsign.

This means that a reject will still be effective even if the callsign or name is changed.

WVRES-X

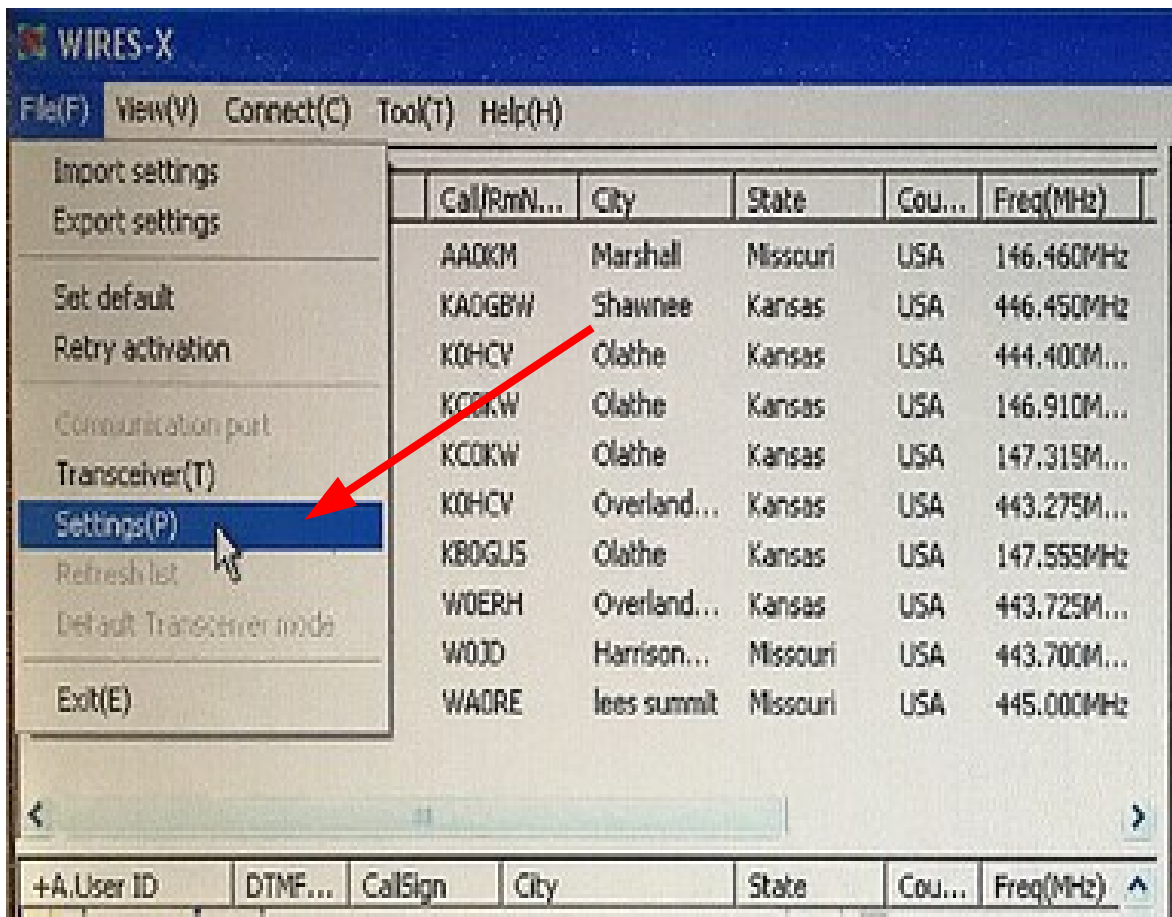
- *Important points to be aware of:*
 - *You can access the Node-Info(N) screen and enter a callsign in the Input ID box. But be aware that this does not work. You must use the methods shown in this document.*
 - *You cannot enter a Radio ID in the Input ID box because it may contain lower case letters and you cannot enter lower case letters in the Input ID box.*
 - *If you have multiple remote nodes linking repeaters to a common room, you will have to reject the callsign on each remote node.*

WIRES-X

It is a good idea at this time to double check to make sure you have the return to room option set correctly and the return to room timer set to 5 minutes.

This will insure that if someone does change to another room it will automatically switch back after five minutes.

WIRES-X

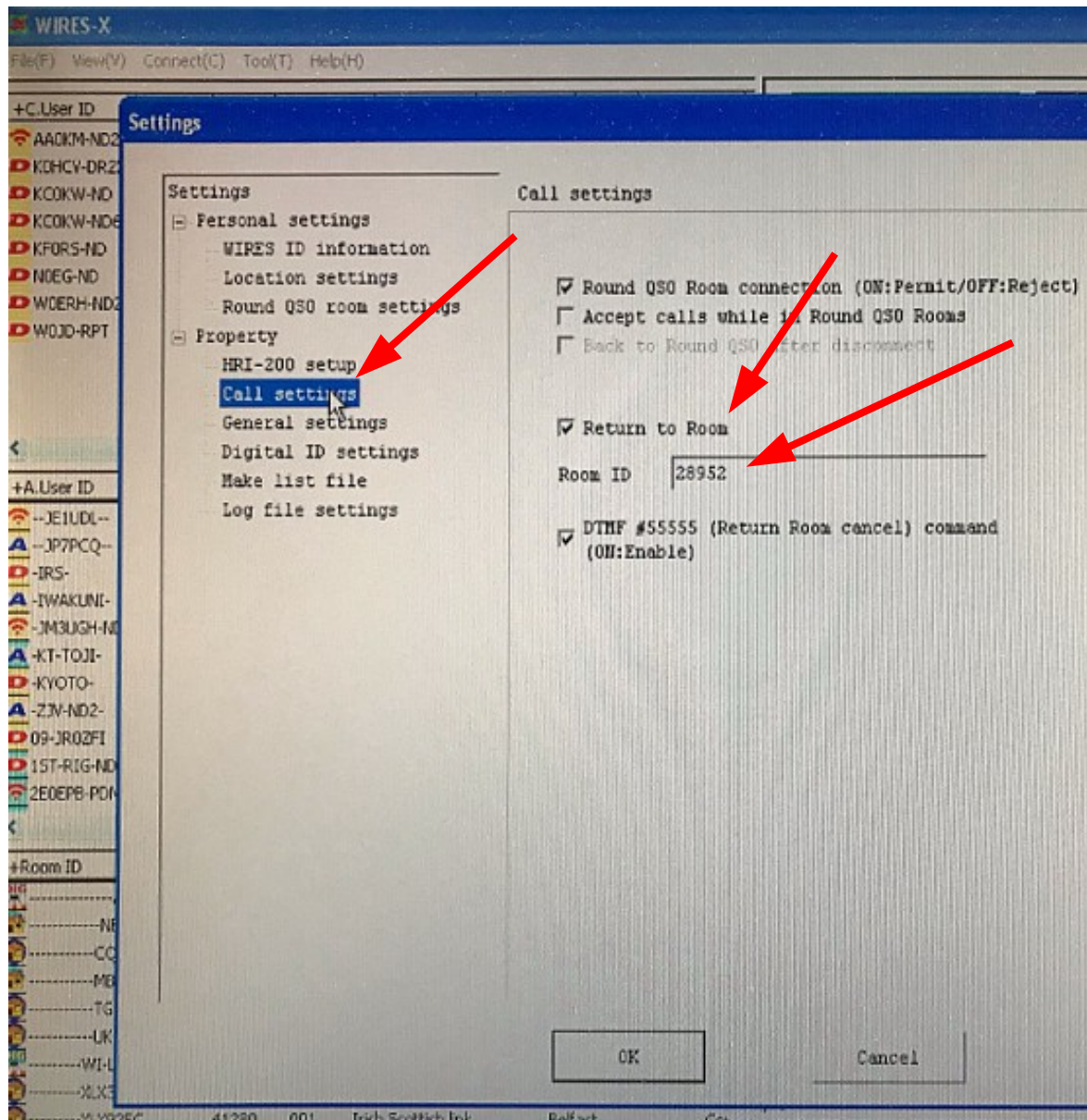


The screenshot shows the WIRES-X application window. The 'File(F)' menu is open, and the 'Settings(P)' option is highlighted with a mouse cursor. A red arrow points from the 'Settings(P)' option to the text on the right. The main window displays a table of radio stations with columns for Call/RmN..., City, State, Cou..., and Freq(MHz).

Call/RmN...	City	State	Cou...	Freq(MHz)
AADKM	Marshall	Missouri	USA	146.460MHz
KA0GBW	Shawnee	Kansas	USA	446.450MHz
KØHCV	Olathe	Kansas	USA	444.400M...
KC0RW	Olathe	Kansas	USA	146.910M...
KC0KW	Olathe	Kansas	USA	147.315M...
KØHCV	Overland...	Kansas	USA	443.275M...
KB0GJ5	Olathe	Kansas	USA	147.555MHz
W0ERH	Overland...	Kansas	USA	443.725M...
W0JD	Harrison...	Missouri	USA	443.700M...
WA0RE	lees summit	Missouri	USA	445.000MHz

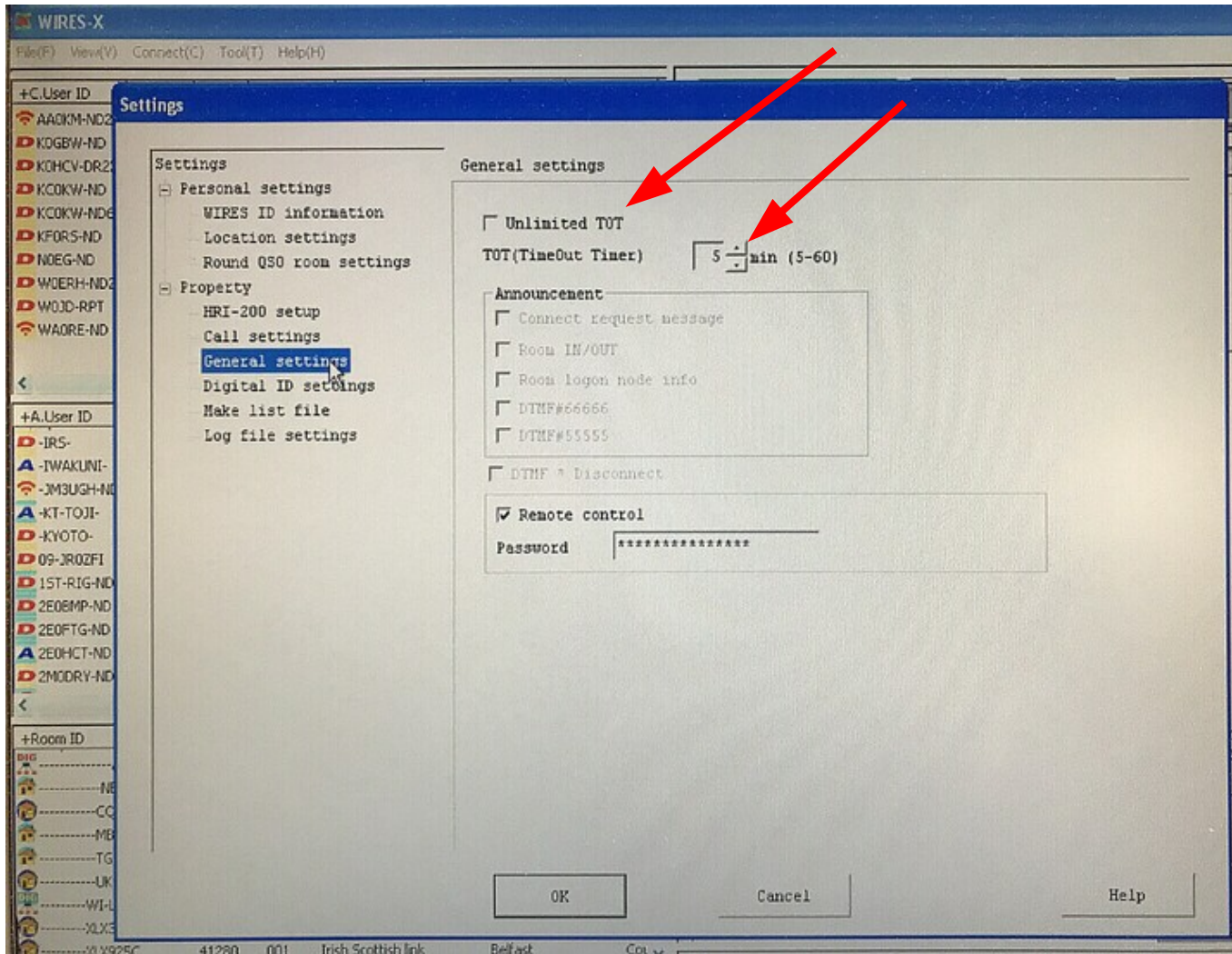
Click on File(F) and select the Settings(P) option.

WIRES-X



Select the Call Settings and make sure the Return To Room box is checked and the Room ID is 28952.

WIRES-X



Select General Settings and make sure the Unlimited TOT box is UNCHECKED and that the TOT is set to 5 minutes.

WIRES-X

This document is for the node stations affiliated with the Kansas City Room therefore some values indicated may not be applicable to your situation.

The callsign chosen for this example is a friend of mine and was selected just as an example for this presentation. (He uses DMR anyway)