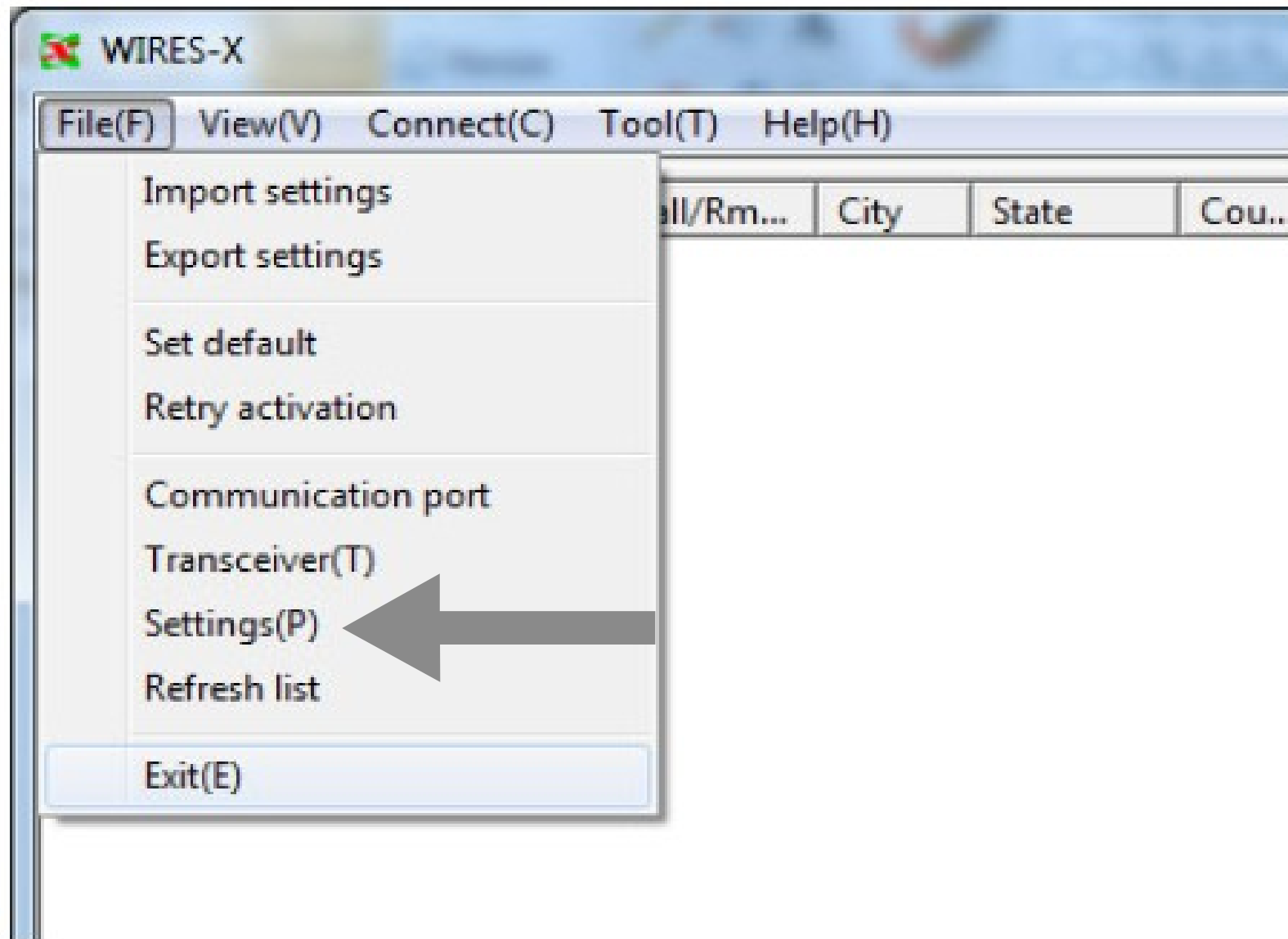


Wires-X Software

How to add a password to your node for remote access

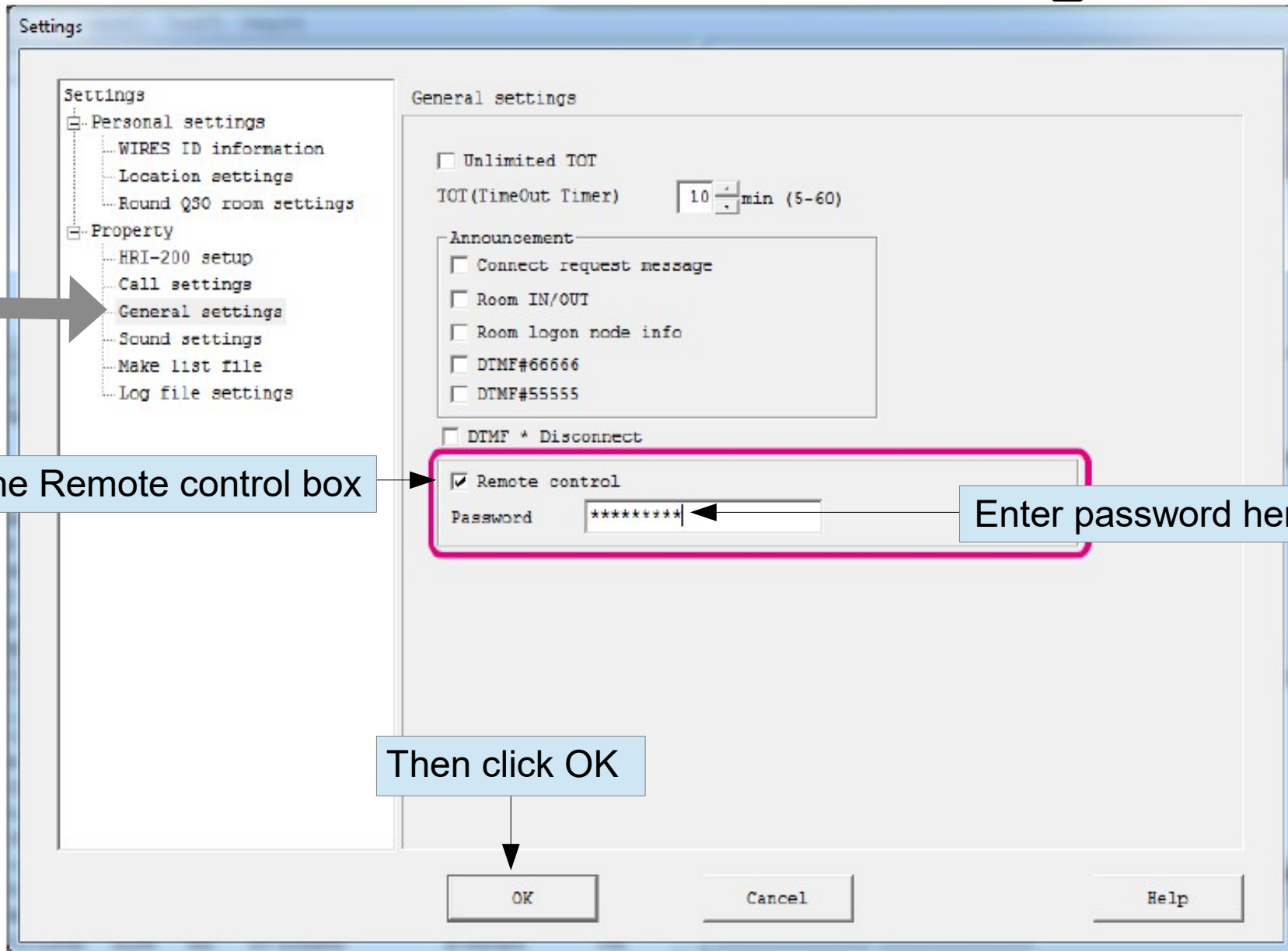
Wires-X Screen

File tab - Select Settings

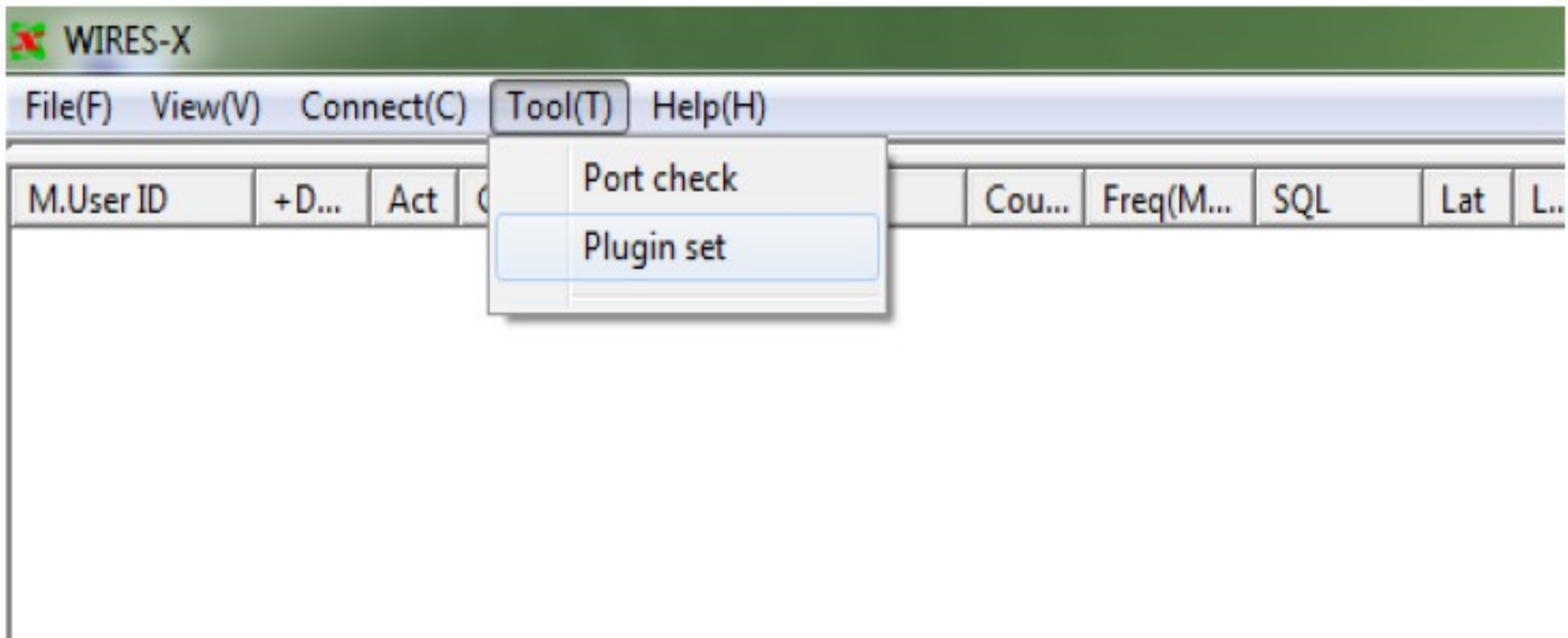


Wires-X Screen

Select General Settings

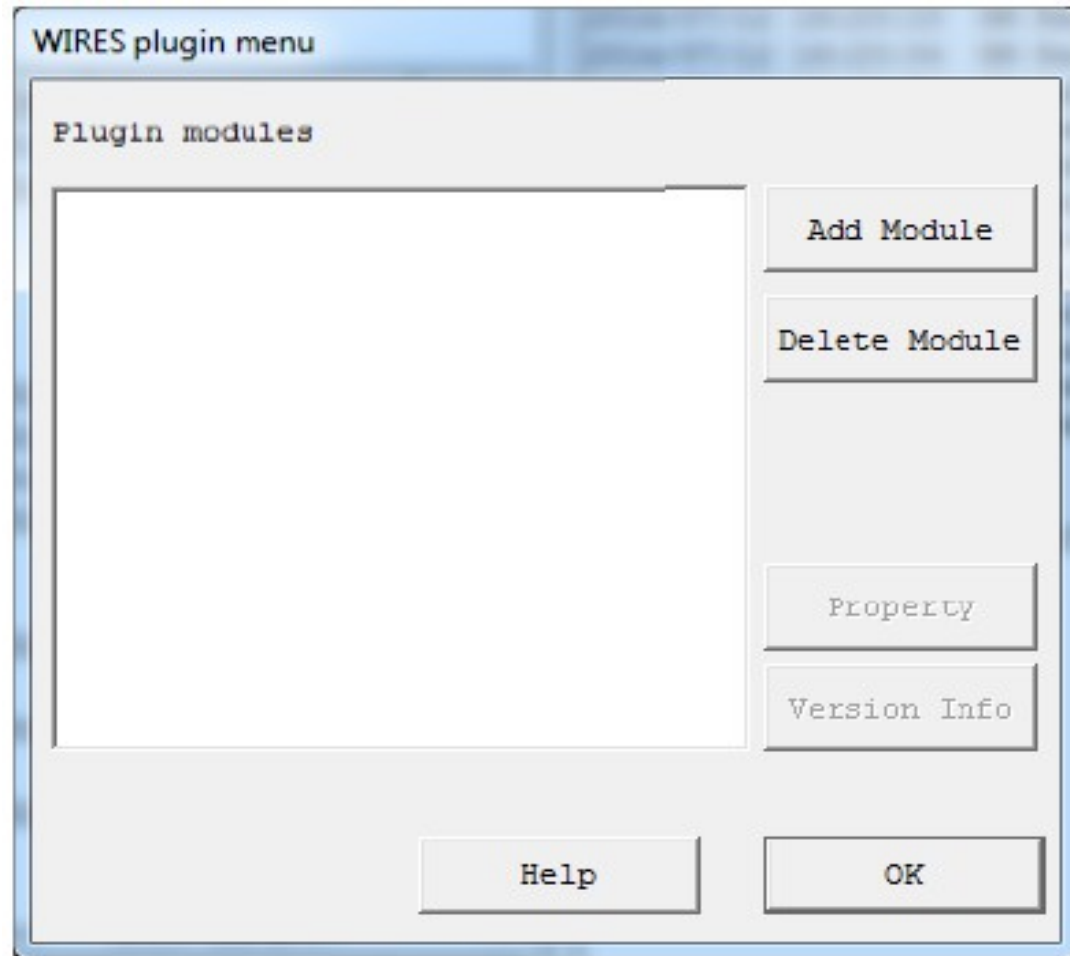


Adding the dedicated plug-in



From the “Tool” menu, click “Plugin set”
The “WIRES plugin menu” window will appear.

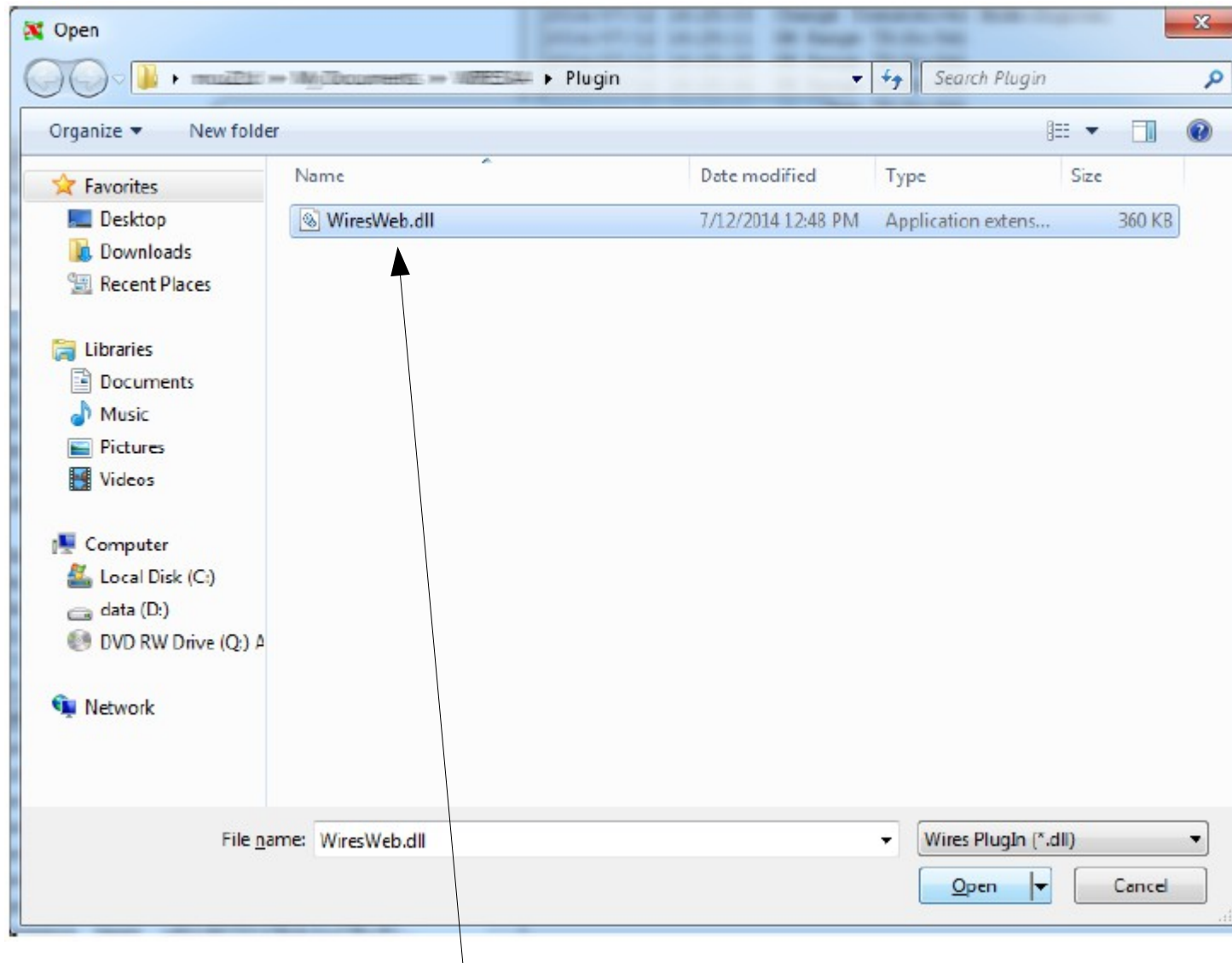
Adding the dedicated plug-in



Click **[Add Module]**

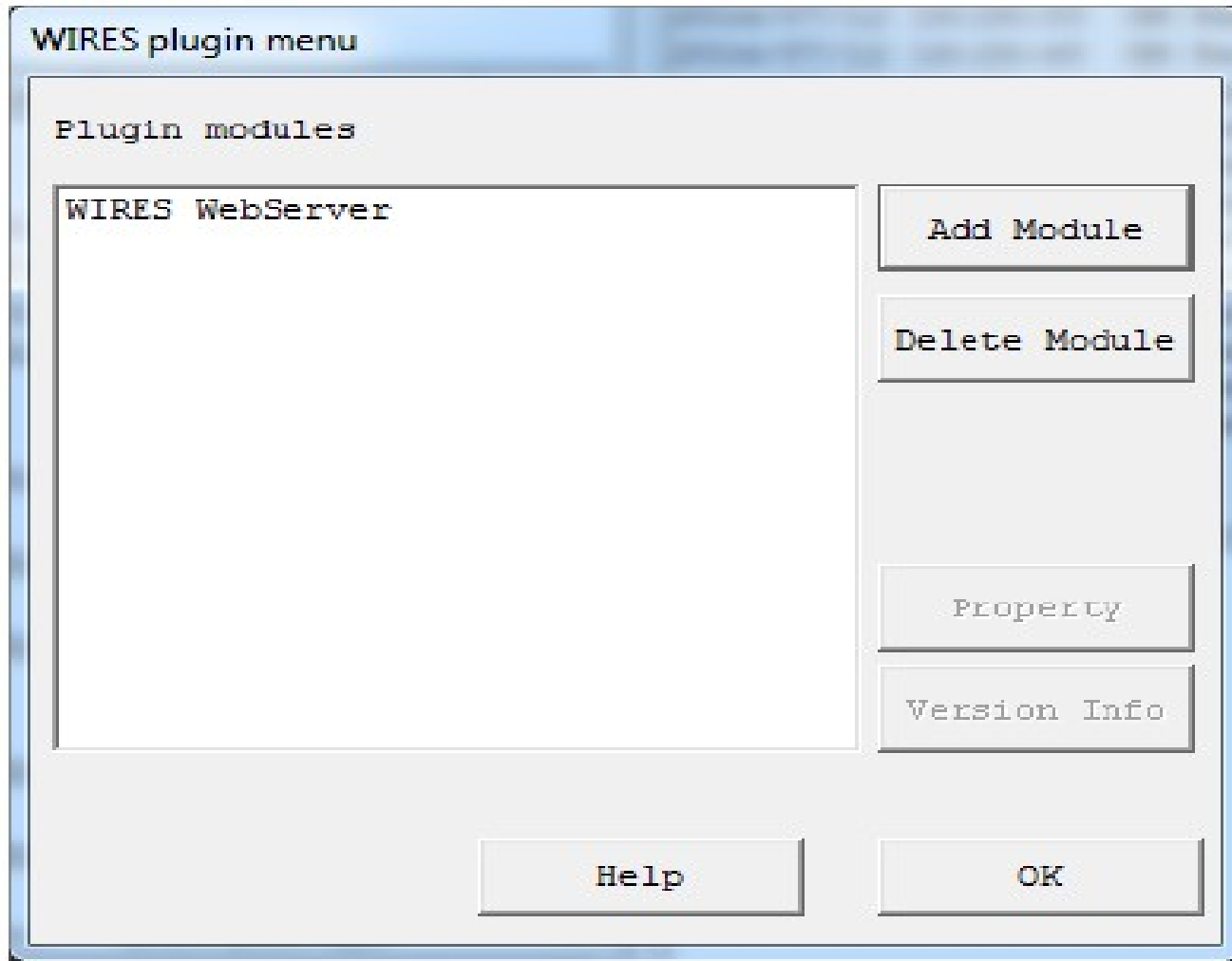
The window prompting you to select the plug-in file will appear.

Adding the dedicated plug-in



Select “WiresWeb.dll”, then click **[Open]**

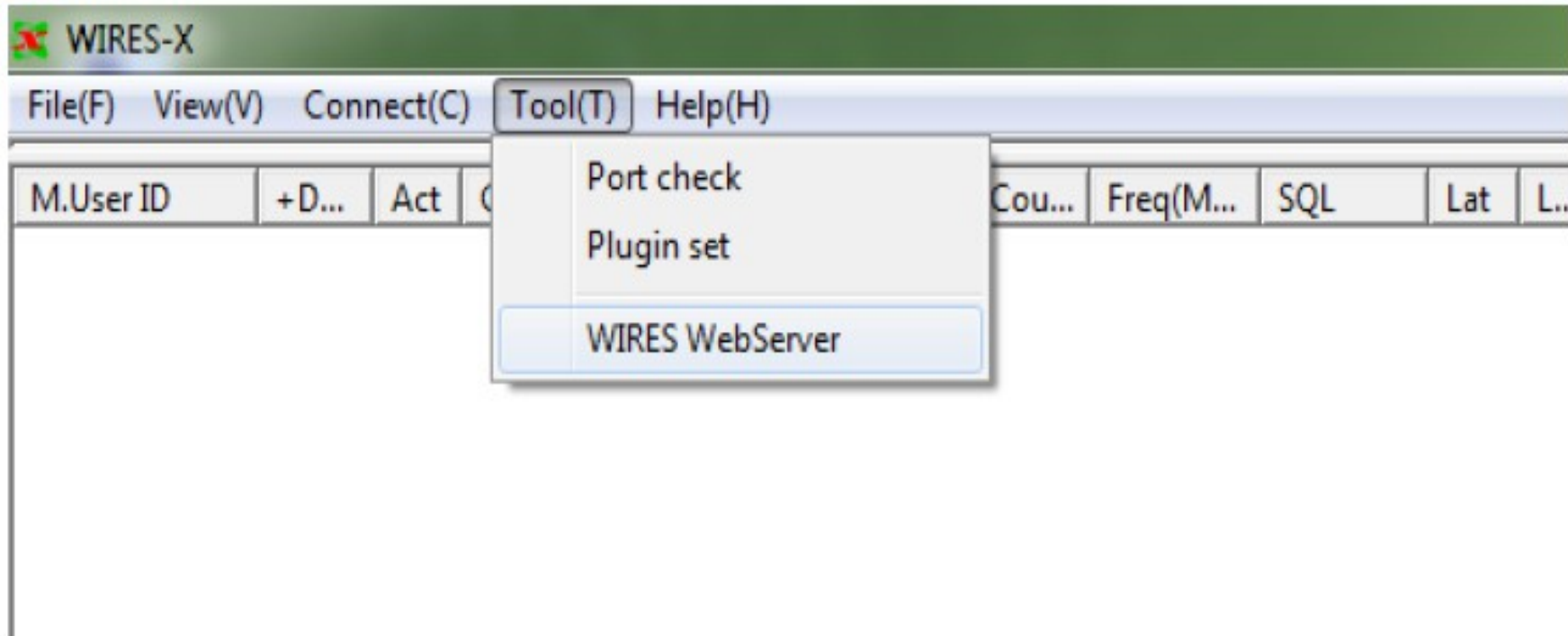
Adding the dedicated plug-in



The “WIRES plugin menu” window will appear again, then in the “Plugin modules” area, “WIRES WebServer” will appear.

Click **[OK]**

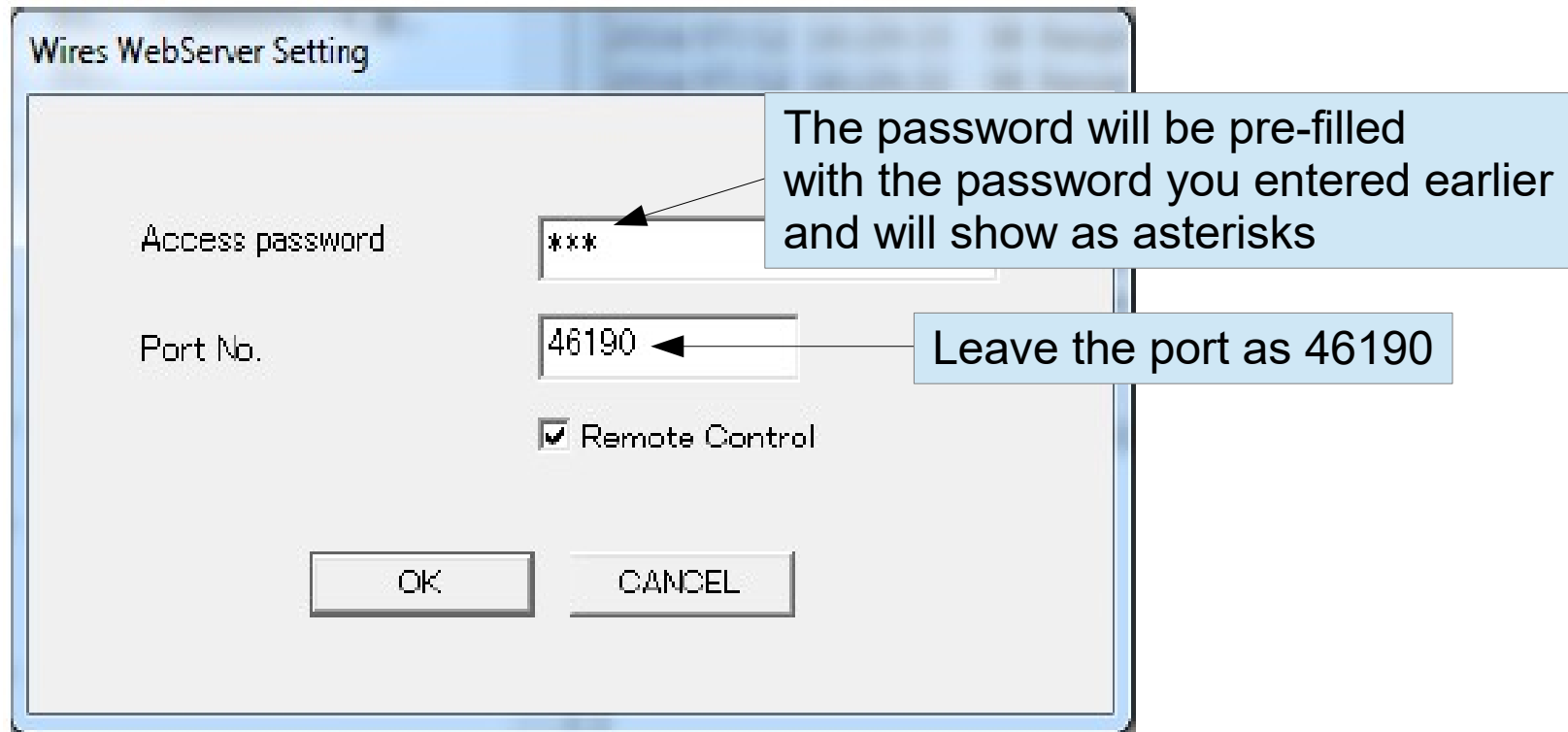
Adding the dedicated plug-in



From the “Tool” menu, click “WIRES WebServer”

The “Wires WebServer Setting” window will appear.

Adding the dedicated plug-in



Tip In the “Access password” box, the password registered in “Configuring the WIRES-X software setting” is inserted automatically.

Click **[OK]**

Adding the dedicated plug-in

There should be a Wires-X icon somewhere on the lower right portion of your screen.



Right click on it and make sure Auto Start is checked.

If you don't have it, skip this step.

Wires-X Remote Access

Congratulations, you have configured your node for remote access.

Thank you